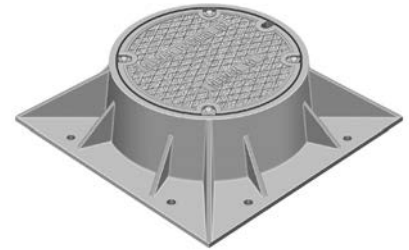
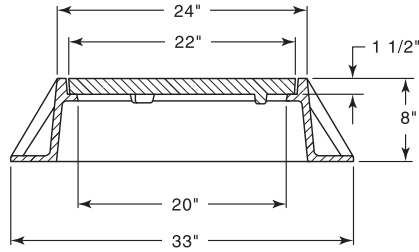
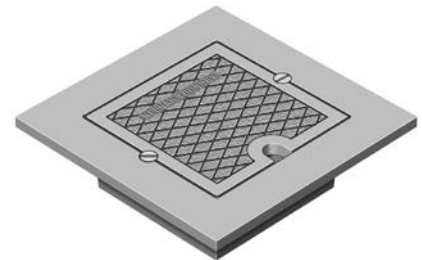
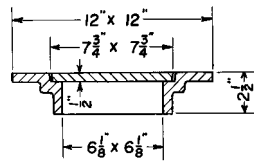


**R-3485-B**  
**Airport Frame, Solid Lid**



*Lids are bolted to frame.*

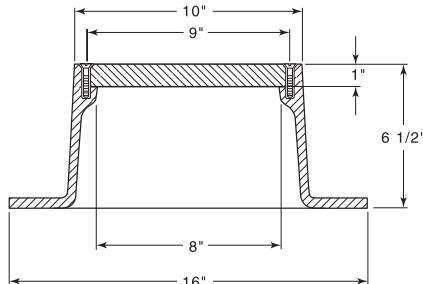
**R-3486**  
**Airport Tie-Down Frame, Lid**



*Lids are bolted to frame.*

Will cover deeply anchored large tie-down eyes for heavy aircraft.  
Meets FAA 250 psi tire pressure requirement.  
Due to small size, 100,000 lb. load not applicable.

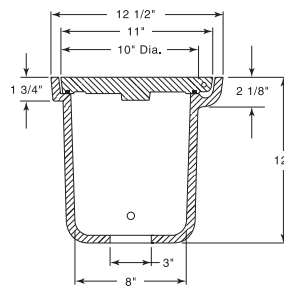
**R-3487**  
**Airport Inspection Frame, Lid**



*Lids are bolted to frame.*

Meets FAA 250 psi tire pressure requirement.  
Due to small size, 100,000 lb. load not applicable.

**R-3488**  
**Airport Control Box Frame, Lid**



*Lids are bolted to frame.*

Lid furnished standard in Ductile Iron.  
Polyisoprene gasket is set in machined groove.  
Lid pivots on stainless steel hinge pin with compression springs.